

MEMORANDUM



OFFICE OF FIRE RESCUE
315 W. Main Street, Suite 411
Tavares, FL 32778

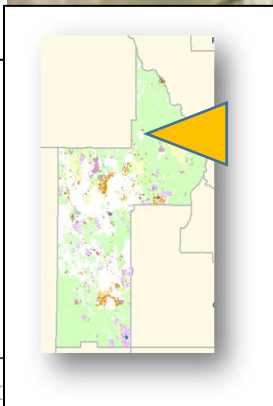
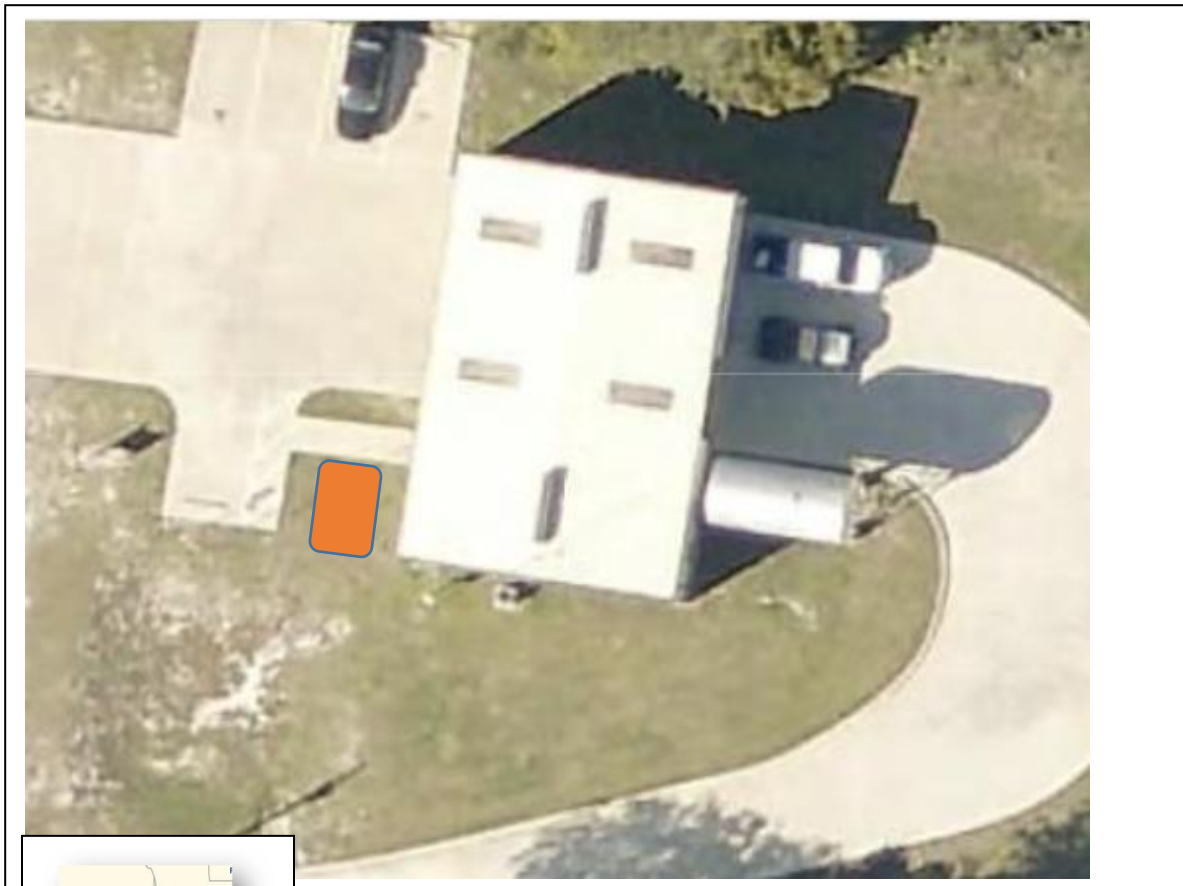
LAKE COUNTY
FLORIDA

P: 352.343.9458
F: 352.343.9516
www.lakecountyfl.gov

Generator 4337-355 Ground Disturbance Map

Fire Station 11 47544 Altoona, FL 32702

Longitude -81.639642 Latitude 29.041600 <https://gis.lakecountyfl.gov/gisweb>



Concrete Slab	4'x 10'	Depth 8"
Wire Trench	6'x 20'	Depth 24"
Total area of Ground Disturbance 50 sq. ft.		

TIM

District 1

JEAN M. PARKS

District 2

WENDY BREEDEN

District 3

LESLIE CAMPIONE

District 4

JOSH BLAKE

District 5

MEMORANDUM



OFFICE OF FIRE RESCUE
315 W. Main Street, Suite 411
Tavares, FL 32778

LAKE COUNTY
FLORIDA

P: 352.343.9458
F: 352.343.9516
www.lakecountyfl.gov

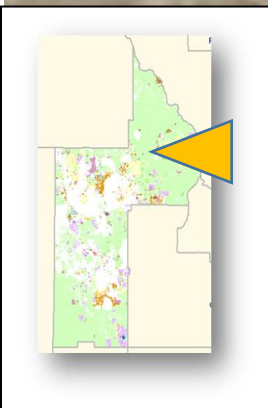
Generator 4337-355 Ground Disturbance Map

Fire Station 19

Address: 38816 Carroll St. Umatilla, FL 32784

Longitude -81.673265 Latitude 28.913863

<https://gis.lakecountyfl.gov/gisweb>



Concrete Slab	4'x 10'	Depth 8"
Wire Trench	6"x 8'	Depth 24"

Total area of Ground Disturbance 44 sq. ft.

TIM

District 1

FAN M. PARKS

District 2

WENDY BREEDEN

District 3

LESLIE CAMPIONE

District 4

JOSH BLAKE

District 5

MEMORANDUM



OFFICE OF FIRE RESCUE
315 W. Main Street, Suite 411
Tavares, FL 32778

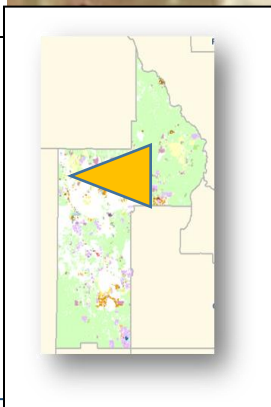
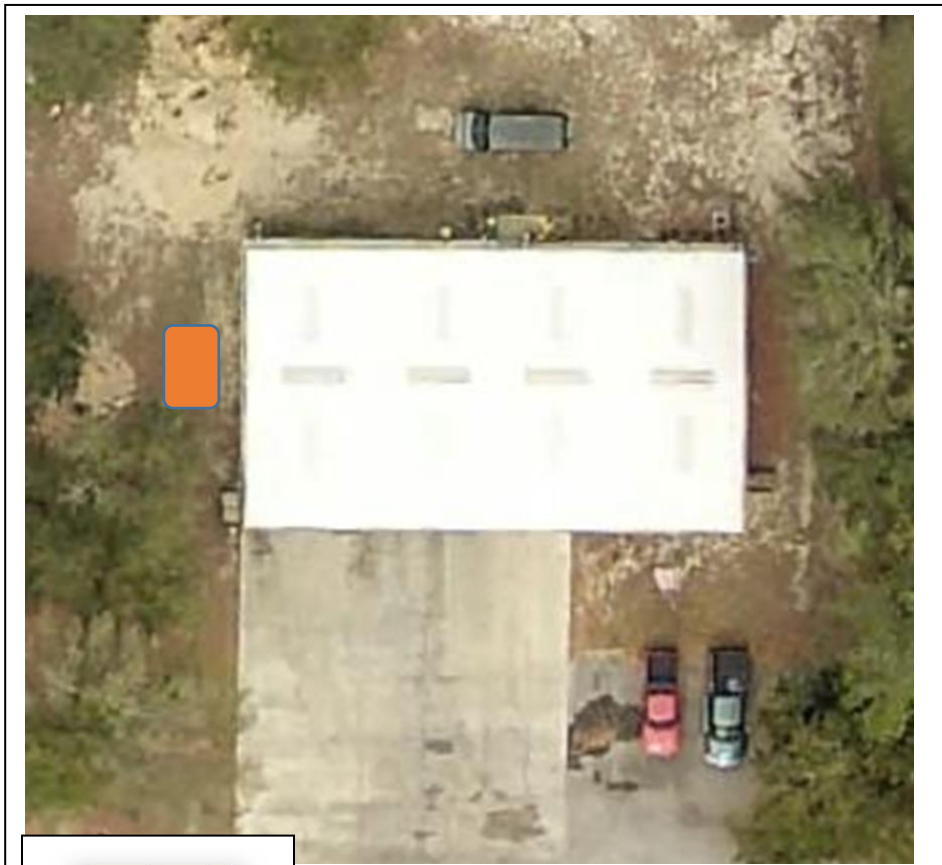
LAKE COUNTY
FLORIDA

P: 352.343.9458
F: 352.343.9516
www.lakecountyfl.gov

Generator 4337-355 Ground Disturbance Map

Fire Station 53 2505 Spring Lake Rd. Fruitland Pk, FL 34731

Longitude -81.900826 Latitude 28.876309 <https://gis.lakecountyfl.gov/gisweb>



Concrete Slab	4'x 10'	Depth 8"
Wire Trench	6"x 10'	Depth 24"

Total area of Ground Disturbance 45 sq. ft.

TIMOTHY I. SULLIVAN
District 1

SEAN M. PARKS
District 2

WENDY BREEDEN
District 3

LESLIE CAMPIONE
District 4

JOSH BLAKE
District 5

MEMORANDUM



OFFICE OF FIRE RESCUE
315 W. Main Street, Suite 411
Tavares, FL 32778

LAKE COUNTY
FLORIDA

P: 352.343.9458
F: 352.343.9516
www.lakecountyfl.gov

Generator 4337-355 Ground Disturbance Map

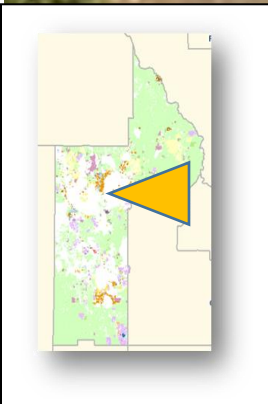
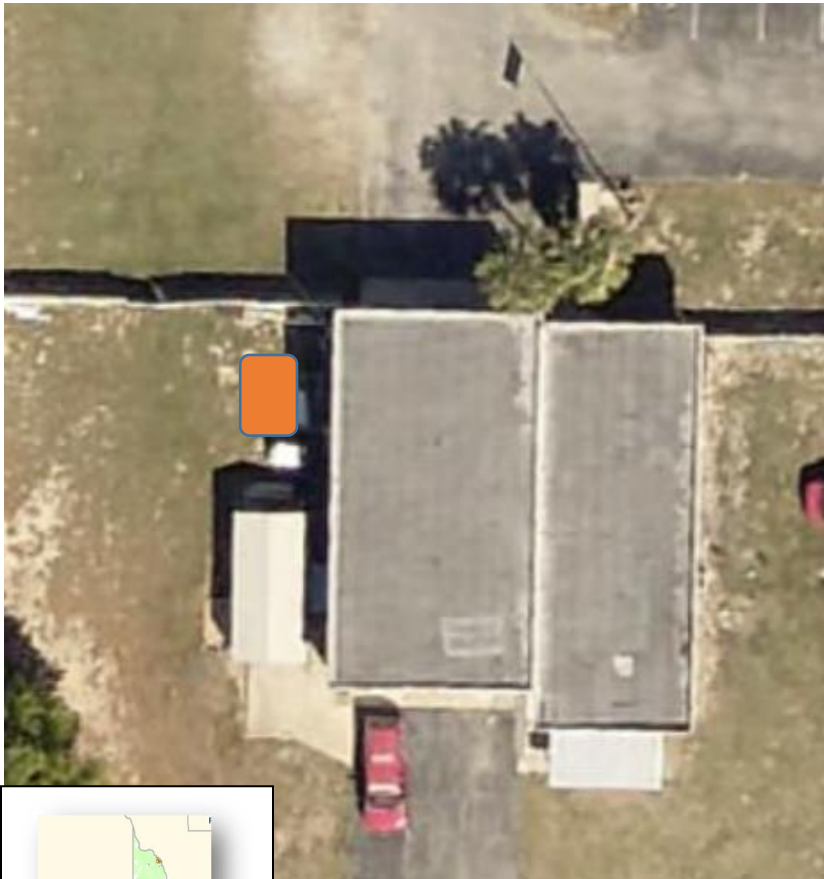
Fire Station 70

Address: 531 Sunnyside Dr. FL 34748

Longitude -81.835190

Latitude 28.807882

<https://gis.lakecountyfl.gov/gisweb>



Concrete Slab	4'x 10'	Depth 8"
Wire Trench	6"x 20'	Depth 24"

Total area of Ground Disturbance 50 sq. ft.

TIM

District 1

JAN M. PARKS

District 2

WENDY BREEDEN

District 3

LESLIE CAMPIONE

District 4

JOSH BLAKE

District 5

MEMORANDUM



OFFICE OF FIRE RESCUE
315 W. Main Street, Suite 411
Tavares, FL 32778

LAKE COUNTY
FLORIDA

P: 352.343.9458
F: 352.343.9516
www.lakecountyfl.gov

Generator 4337-355 Ground Disturbance Map

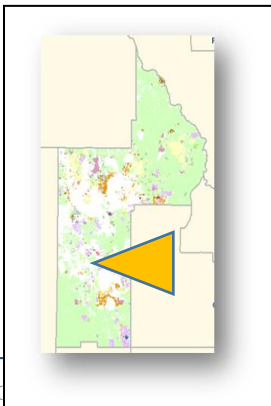
Fire Station 82

Address: 24929 U. S. Hwy 27 Leesburg, FL 34748

Longitude -81.860509

Latitude 28.710711

<http://gis.lakecountyfl.gov/gisweb>



Concrete Slab	4'x 10'	Depth 8"
Wire Trench	6"x 30'	Depth 24"

Total area of Ground Disturbance 55 sq. ft.

TIM

District 1

JEAN M. PARKS

District 2

WENDY BREEDEN

District 3

LESLIE CAMPIONE

District 4

JOSH BLAKE

District 5

MEMORANDUM



OFFICE OF FIRE RESCUE
315 W. Main Street, Suite 411
Tavares, FL 32778

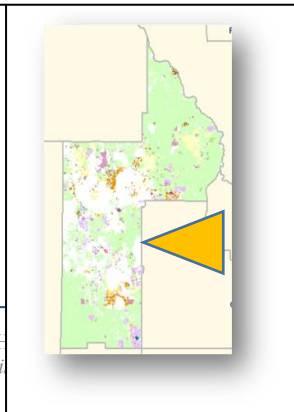
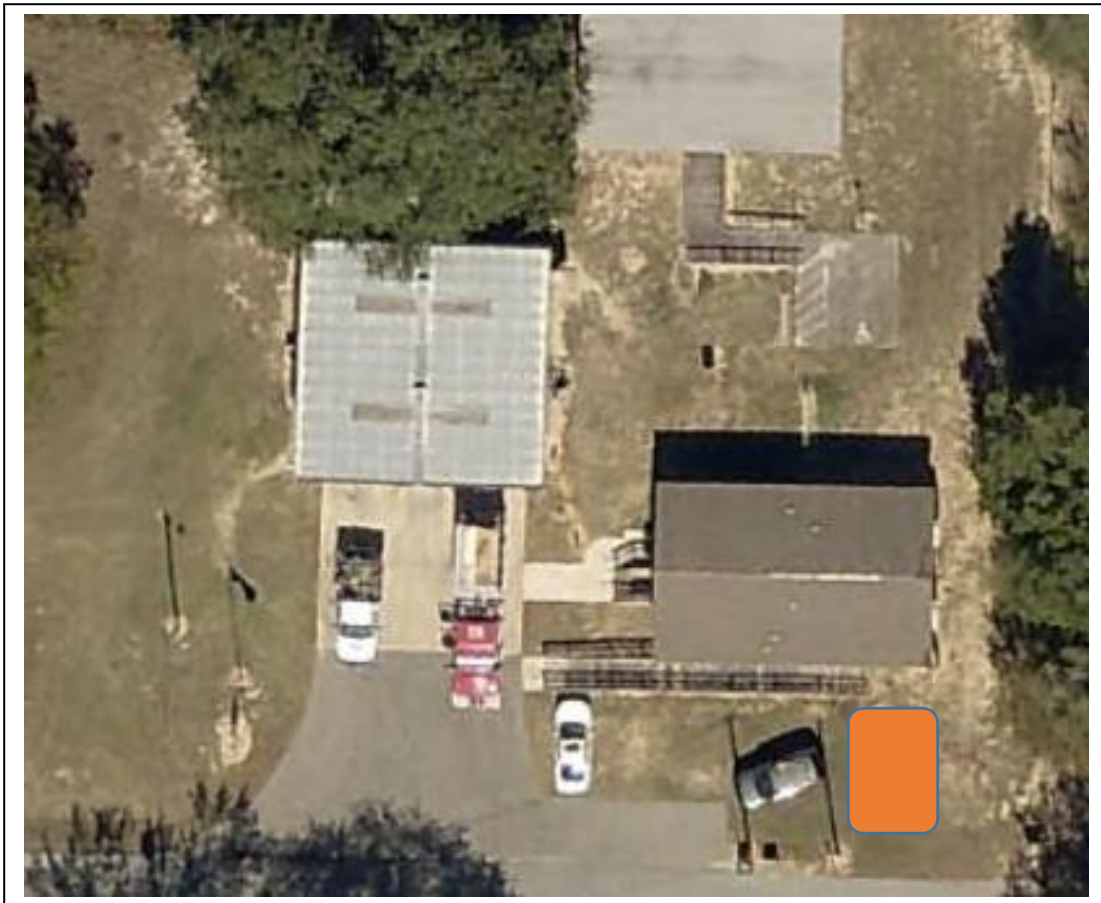
LAKE COUNTY
FLORIDA

P: 352.343.9458
F: 352.343.9516
www.lakecountyfl.gov

Generator 4337-355 Ground Disturbance Map

Fire Station 83 15303 Ferndale Community Rd. Clermont 34715

Longitude -81.701068 Latitude 28.623620 <https://gis.lakecountyfl.gov/gisweb>



Concrete Slab	4'x 10'	Depth 8"
Wire Trench	6'x 20'	Depth 24"
Total area of Ground Disturbance 50 sq. ft.		

TIMOTHY
District 1

M. PARKS
District 2

WENDY BREEDEN
District 3

LESLIE CAMPIONE
District 4

JOSH BLAKE
District 5

MEMORANDUM



OFFICE OF FIRE RESCUE
315 W. Main Street, Suite 411
Tavares, FL 32778

LAKE COUNTY
FLORIDA

P: 352.343.9458
F: 352.343.9516
www.lakecountyfl.gov

Generator 4337-355 Ground Disturbance Map

Fire Battalion Station 90 609 Disston Ave, Minneola, FL 34715

Longitude -81.749174 Latitude 28.572869 <https://gis.lakecountyfl.gov/gisweb>



Concrete Slab	4'x 10'	Depth 8"
Wire Trench	6"x 40'	Depth 24"

Total area of Ground Disturbance 60 sq. ft.

TIMOTHY I. SULLIVAN
District 1

SEAN M. PARKS
District 2

WENDY BREEDEN
District 3

LESLIE CAMPIONE
District 4

JOSH BLAKE
District 5